



LIQUID GLOSS

Technical Manual



NAK HAIR
AUSTRALIA

Colour your way

An exquisite colour gloss and toning system
created by NAK Hair.

Featuring an ammonia free formulation enriched
with nourishing skin protectives, incorporating
delicate colour actives that are PPD free.
Replenishing hydration, condition and shine each
time you gloss.



More than just toning

Toning Table

Create beautiful toning lustre, without the risk of base-break. Refine unwanted warmth and deposit cool or neutral tones. Restore gloss, tone and condition as you colour.

EXISTING LEVEL	EXISTING TONE	CORRECTIVE TONE	COOLEST RESULT	COOL RESULT	NEUTRAL RESULT
Level 6	Orange	Blue	6AA	1/2 6AA ± 1/2 7V	1/2 6AA ± 1/2 Clear
Level 7	Gold	Blue Violet	7A	1/2 7V ± 1/2 7A	1/2 7V ± 1/2 Clear
Level 8	Yellow	Violet	8P	8V	1/2 8V ± 1/2 Clear
Level 9	Pale Yellow	Pale Violet	9ST	9V	1/2 9V ± 1/2 Clear
Level 10	Palest Yellow	Palest Violet	1/2 10P ± 1/2 9V	10NA	1/2 10NA ± 1/2 Clear





More than just toning

Gloss Guide

Each person has their own colour story

To ensure safe colouring in the salon, please complete our Colour Safe Guide and perform an allergy alert skin test 48 hours prior to the intended colour service. Please wear gloves when using colour products, mixing your colour just prior to application.

MIXING GUIDE 1±1.5 RATIO

MIX	1 Part NAK Liquid Gloss ± 1.5 Parts NAK Liquid Gloss Activator
	20ml NAK Liquid Gloss ± 30ml NAK Liquid Gloss Activator
PROCESS	15-20mins
NAK Clear Gloss Pasteliser may be mixed with any shade to lessen or lighten the tone of the formula.	

COLOUR PREP

- Cleanse hair with NAK Ultimate Cleanse Shampoo
- Condition and detangle porous hair, rinse and towel dry
- Apply NAK Colour Support Porosity Equaliser where needed

APPLICATION

- Apply to clean, damp, detangled hair and distribute evenly
 - Massage and comb through to mid-lengths and ends
 - Process colour at room temperature. Do not add heat
- BOTTLE OR BRUSH - YOU DECIDE**
- Bottle: Perfect for express applications at the basin
 - Brush: Perfect for specialised applications at the chair

TIMING

- To ensure toning durability, maximum timing is recommended
- Timing depends on texture, porosity and desired shade result

TO REMOVE

- Cleanse lightly and rinse until the water is clear
- Condition and detangle with your preferred NAK Conditioner or Treatment

Bespoke Shades

Bordeaux

6RR Scarlet • 7MV Sienna



1/2 Part 7MV Sienna
1/2 Part 6RR Scarlet
±
1.5 Parts LG Activator

Bespoke Shades

Buttery Blonde

10P Haze • 9V Luna • Clear Gloss



1/3 Part 10P Haze
1/3 Part 9V Luna
1/3 Part Clear Gloss
±
1.5 Parts LG Activator



Bespoke Shades

Blushing Peach

10RC Peach • 9RR Blossom



1/2 Part 10RC Peach
1/2 Part 9RR Blossom
±
1.5 Parts LG Activator

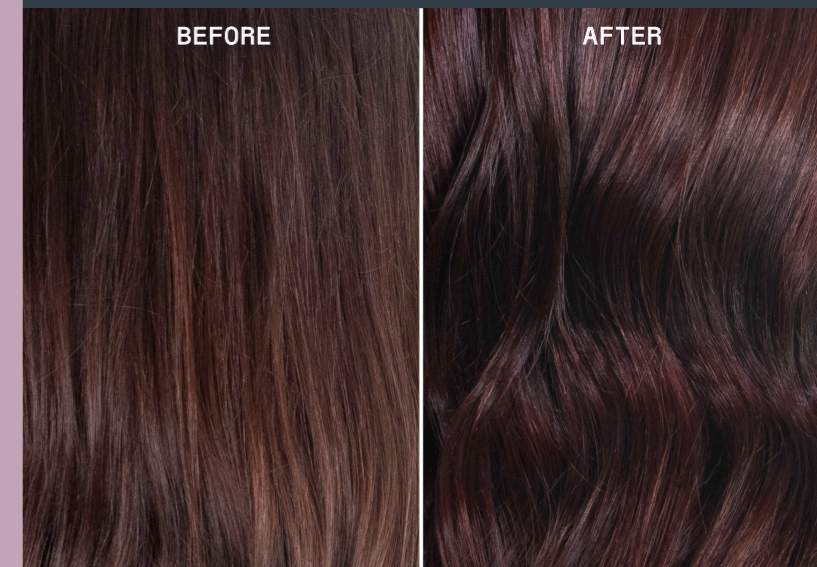
Bespoke Shades

Deep Burgundy

7G Toffee • 6CH Truffle



1/2 Part 7G Toffee
1/2 Part 6CH Truffle
±
1.5 Parts LG Activator



Liquid Gloss

In Detail

The Evolution of Colour Products

Traditional colour products are designed to penetrate the hair structure with ease; formulated to create vibrant colour change, lightening and maximum coverage. However, with the rise of paint-on lightening techniques - such as balayage - salon toning needs have changed. When there is a high percentage of natural colour present, traditional colour products may be too strong and therefore not suitable.

Colour Rule: The more gentle the colour product used, the lower the activator, the less potential for base-break.

Understanding Base-Break

Base-Break is best described as unwanted lightening of the natural base colour or regrowth, sometimes described as Root Glow or Base Bump. Base-Break generally occurs during toning when a shift in the natural base colour is created. This is due to the strength of the toning product and colour formula used, which reveals underlying pigment and unwanted warm tones.

Creating Base-Break

Creative colourists may choose to intentionally create base-break as part of the colour service. Base-Break is only a concern if it is not desired. Knowing how to avoid or create base-break is the secret to reaching your colour and toning goals.

No more guesswork

NAK Liquid Gloss takes the guesswork out of product selection, ensuring successful colour and toning design. Perfect for toning hair after lightening, highlights or balayage, when there is natural base colour or regrowth to consider. Colour or tone can be retouched whilst natural hair remains untouched.

Shines like no other

Features 40 illuminating shades which equalise gloss, shine and condition as you colour.

PPD Free

Featuring micro-dimensional colour pigments that are PPD free. For gentle colouring and a possible option for sensitised clients who cannot use colourant products containing PPD.

Ammonia Free

Provides gentle no-lift colour and toning results with an Ammonia-free colour active known as Ethanolamine. Ensures a delicate colour deposit that transcends traditional products.

Gentle colour activation

NAK Liquid Gloss Activator ensures gentle colour activation and has been formulated to be used exclusively with NAK Liquid Gloss shades. Concentrated with extracts of Squalane, a moisture-balancing extract obtained from sugarcane. Contains 1.5% Hydrogen Peroxide.

Please Note: Base-Break may occur if a different activator is used.



LIQUID GLOSS

BY NAK HAIR

	NATURAL	NATURAL ASH	ASH GOLD	GOLD BEIGE	CHESTNUT	GOLD	SILVER TITANIUM	ASH	VIOLET	PEARL	ROSE	ASH ROSE	ROSE GOLD	COPPER	COPPER ROSE	RED COPPER	RED ROSE	MAHOGANY	MAHOGANY VIOLET
TONAL BASE	Neutral Brown	Blue Brown	Blue Yellow	Yellow Brown	Yellow Orange Brown	Yellow	Silver Blue	Blue	Lilac Violet Blue	Lilac Blue Violet	Pink Blue Violet	Silver Blue Red	Red Yellow	Yellow Orange Red	Orange Red	Red Orange	Red	Red Violet Brown	Red Brown Violet
LEVEL 10 PLATINUM BLONDE	NOUGAT 10N	MUSHROOM 10NA								HAZE 10P						PEACH 10RC			
LEVEL 9 VERY LIGHT BLONDE	LATTE 9N		DRIFTWOOD 9AG	CHINO 9B VELVET 9NW		SAND 9G	OYSTER 9ST		LUNA 9V	MINK 9P	ROSE 9R	DUSK 9AR	BLUSH 9RG	SUNSET 9C			BLOSSOM 9RR		
LEVEL 8 LIGHT BLONDE	EUCALYPT 8N			CARAMEL 8GB	HAZELNUT 8H	GOLDIE 8G HONEY 8GG			QUARTZ 8V	PEWTER 8P									
LEVEL 7 MEDIUM BLONDE	SAHARA 7N					TOFFEE 7G		STEEL 7A	VENUS 7VV					SAFFRON 7CC	PAPRIKA 7CR			MAPLE 7M	SIENNA 7MV
LEVEL 6 DARKEST BLONDE	COCO 6N	WOOD 6NA			TRUFFLE 6CH			GRAPHITE 6AA									SCARLET 6RR	STORMY 6VM	ROUGE 6RB
LEVEL 5 LIGHT BROWN		MOCHA 5NA		MACCHIATO 5NW														BERRY 5M	
LEVEL 4 DARK BROWN		ESPRESSO 4NA																SUNDARA 4WG	
LEVEL 3 DARK NATURAL BROWN	NOIRE 3N																		

MIXING GUIDE 1±1.5 RATIO

1±1.5 ratio with NAK Liquid Gloss Activator. **Process** for **15-20mins**.
 NAK Clear Gloss Pasteliser may be mixed with any shade to lessen or lighten the tone of the formula.

Treatment

Structure Complex

Simply follow the 10% rule.

- Combine NAK Liquid Gloss with NAK Liquid Gloss Activator
- Add in the correct amount of NAK Structure Complex No.1 Bond Builder
e.g. 20ml NAK Liquid Gloss + 30ml LG Activator.
Mix as per normal, then add 2ml No.1 Bond Builder
- Shake or whisk thoroughly and apply to clean damp hair, process 15-20mins
 - Rinse and remove, cleansing with your preferred NAK Shampoo
- Apply NAK Structure Complex No.2 Bond Enforcer from roots to ends, leave 5-15mins
 - Rinse and complete with your desired NAK Conditioner or Treatment
 - Finish with NAK Colour Fix Treatment, process 15-20mins



Technique

Grey Blending

Commitment-free colour.
Enhancing grey or white hair
without harsh regrowth.

- Select your desired level matching the natural hair
- Intermix with either 6AA, 7A, 7VV, 8V or 9V.
This will ensure any underlying warmth is neutralised, and will leave a seamless blend.
 - Mixing ratio: 1:1
 - Process 25-35mins

Technique

Root Stretch / Root Tap

Smooth glossy colour.

Like other demi colours, NAK Liquid Gloss gradually fades over time, creating soft transitions and avoiding harsh demarcation lines. Liquid Gloss is ideal for transition areas like root taps or stretches. Root taps and stretches involve darkening and softly blending the root area, contrasting with the lengths and ends of the hair. A root tap is generally 1cm in depth, while a root stretch is much deeper, depending on the desired outcome.

Get creative and play with the depth of the shading to customise the overall effect. To achieve flawless root stretches and taps every time, it's crucial to perfect your formulation. Design your formula based on the desired level or depth of colour.

Select your go-to mix from the NAK Liquid Gloss Formulation Table.

10ml 5NA	+	10ml 6N	+	30ml LG Activator
		20ml 6NA	+	30ml LG Activator
10ml 7N	+	10ml 7A	+	30ml LG Activator
10ml 7N	+	10ml 7G	+	30ml LG Activator
		20ml 8P	+	30ml LG Activator
10ml 8N	+	10ml 9AG	+	30ml LG Activator
10ml 9N	+	10ml 9P	+	30ml LG Activator

Technique

Dimensional Blondes

Seamlessly blending and gradually fading.
Add dimension to your blondes
without the commitment.

- Select shades 1-2 levels apart to bring back dimension into your global blondes
- Select shades from the G, N, B and CH collections to create natural looking blondes



Get the Gloss

FAQs

Why did we create Liquid Gloss?

To address the global challenge of base-break and meet the changing needs of salons.

Is Liquid Gloss a Demi?

Yes. Liquid Gloss provides tone-on-tone colour deposit. This range offers the conditioning and shine of a Semi, with the true colour deposit of a Demi.

Are some shades similar to other brands?

Yes. Like all colour collections, there are similar shades. However, there are never exact matches. Individual colour results are dependent upon the starting point, existing level, selected shade, hair texture and condition. Please create a test swatch and/or perform a strand test when colour-matching for a specialised shade result.

How many shades are in the collection?

There are 40 illuminating shades, easily intermixed to enhance and refine colour and toning results. Neutral naturals, cool naturals, warm blondes and cool blondes, as well as a selection of popular fashion shades.

Why names and letters?

Liquid Gloss uses names for easy identification. The letters relate to the shade family and represent the primary and secondary reflects or tonal base. The number represents the level - i.e. how light or dark a shade is.

Is the colour code the same as NAK Permanent?

The colour code of numbers and letters is the same; the colour performance, shade result, pigment types and strength of actives are entirely different.

How is Liquid Gloss different to NAK Permanent & NAK Soft?

Both NAK Permanent and NAK Soft feature traditional colour actives and PPD colour compounds. NAK Liquid Gloss is an advanced formulation, featuring liquid colour technology, which is PPD Free.





Can Liquid Gloss be intermixed with NAK Permanent or NAK Soft?

Liquid Gloss is PPD Free and cannot be intermixed with any other NAK colour product. However, it can be used at the same time - i.e. NAK Permanent or NAK Soft may be used to retouch the regrowth, and Liquid Gloss can be used separately to colour balance the mid-lengths and ends.

What is the expected colour longevity?

Liquid Gloss can last 12 or more shampoos. However, colour longevity and durability are dependent on porosity, condition, care and lifestyle factors. Deeper tones and brighter shades may last longer, i.e. up to 24 shampoos. To safeguard hair fabric from potential colour fade, we recommend using cooler water during cleansing and thermal protectives during all styling rituals.

Is Liquid Gloss acidic or alkaline?

Liquid Gloss creates gentle colour activation in a low alkaline environment, pH 8.

Can heat be used with Liquid Gloss?

Heat is not required or recommended.
Liquid Gloss should be processed at room temperature.

Can Clear Gloss Pasteliser be used on its own?

Yes. Clear Gloss Pasteliser is perfect for using on its own, as it creates a high-gloss finish, accentuating colour and lustre. Alternatively, you can use Clear Gloss to lessen or lighten any Liquid Gloss shade.

Can a different activator be used?

No, it is not recommended. Liquid Gloss Activator is a specialised formula, concentrated in Squalane, which assists with gentle colouring and moisture-balance. This ensures ultra-conditioning colour and toning replenishment with every application.

Please Note: Base-Break may occur if a different activator is used.

Is an allergy alert skin test required before colouring?

For safe colouring in the salon, it is a requirement to perform an allergy alert skin test 48 hours prior to colouring. Please refer to the NAK Colour Safe Guide for safe colouring in the salon.

For guidance when using Liquid Gloss, please call the NAK Hotline on +61 7 3895 4566.

Colour Safe Guide

Is your client 16 years old or under?	YES	NO
Has your client had an allergic reaction to any type of hair colourant product?	YES	NO
Has your client had an allergic reaction to any type of skin tattoo, black henna tattoo, or permanent makeup?	YES	NO
Does your client have a rash on their face, have a damaged scalp, or have broken or irritated scalp skin?	YES	NO
Is this a new colour client to your salon, or are you using a different shade or brand of colour?	YES	NO
Has it been more than 6 months since your client last had a colour service in your salon?	YES	NO
Has your client had any type of skin tattoo, black henna tattoo or permanent makeup since their last colour service?	YES	NO
Has your client had any type of allergic reaction since their last hair colour service?	YES	NO
<p>IF YOU HAVE ANSWERED NO TO ALL QUESTIONS - YOU MAY PROCEED WITH COLOURING YOUR CLIENT'S HAIR TODAY.</p> <p>IF YOU HAVE ANSWERED YES TO ANY QUESTION - STOP DO NOT COLOUR YOUR CLIENT'S HAIR TODAY.</p> <p>PLEASE PERFORM AN ALLERGY ALERT SKIN TEST AS DIRECTED.</p>		

Allergy Alert Skin Test

- An allergy alert skin test must be performed 48 hours prior to colouring the hair
 - Mix a small amount of Liquid Gloss with a small amount of Liquid Gloss Activator
 - Clean the area with an alcohol wipe to prepare skin for testing
- Apply colour to patch of skin on the inside of the arm or behind the ear
 - Use a cotton swab to apply the colour mixture to the skin
- Allow colour mixture to dry, then apply a small bandage to cover. Leave on the skin for 48 hours to test for a delayed reaction. Skin should not get wet during the 48 hours. Look for a visible change in the skin - e.g. irritation, itching, redness, bumps.
- Remove and clean immediately if there is any discomfort or sensitivity

SIGNS OF A POSSIBLE REACTION:

- Increasing irritation or discomfort
- Redness, blistering or rashes
- Intense burning, itching or stinging

MANAGING A SKIN REACTION DURING A COLOUR SERVICE

If there are signs of sensitivity or irritation beyond the normal sensory experience during a colour service, STOP and remove the products immediately.


- Rinse thoroughly with lukewarm water
- Cleanse and remove all traces of colour product from the hair and scalp
 - Towel dry the hair and apply NAK Colour Support Soothing Fluid only to the scalp or skin
 - Advise your client to seek immediate consultation with a medical doctor or pharmacist
 - Record all signs of irritation, colour mix and removal processes, including the date and time
- Offer professional care and support during the recovery process



LIQUID
GLOSS

NAK HAIR

A U S T R A L I A

INFO@NAKHAIR.COM.AU . NAKHAIR.COM.AU .  @NAKHAIR
7 EAGLEVIEW PL EAGLE FARM QLD 4009 AUSTRALIA . T +61 7 3899 9133

9



NLGTMAN24